



University
of London

Belsize Park

Wendling, Haverstock Road, NW5 4QY

**Student
Homes**

A 4 bedroom maisonette located in a well-maintained block. Room 1 & Room 2 are available from 1st June.

- ❖ Wendling is a 4 bedroom maisonette with 2 double bedrooms & 2 single rooms.
- ❖ The property features a kitchen/diner, a small sitting room, a bathroom and separate toilet.
- ❖ Tenancies run until 7th September 2017.
- ❖ Room 1 & 3 are priced at £134.56 p/w, Room 2 is priced at £147.95 p/w and Room 4 is priced at £142.78 p/w. Bills are not included in the rent, and are payable on top.
- ❖ The property is located close to local amenities, as well as many independent shops, restaurants and bars in Belsize Park and Hampstead. Hampstead Heath is around a 5 minute walk away.
- ❖ Wendling is a 25-30 minute total commute to SOAS Russell Square & a 30 minute commute to SOAS Vernon Square. Belsize Park (Northern), and Chalk Farm (Northern) are the nearest tube stations. There are also regular buses to Central London, including the 24 and 168.

University of London Student Homes

4th Floor, Housing Services, Student Central, 2 Malet Street, London, WC1E 7HY.

020 7664 4836 • <http://studenthomes.london.ac.uk>

Photographs:

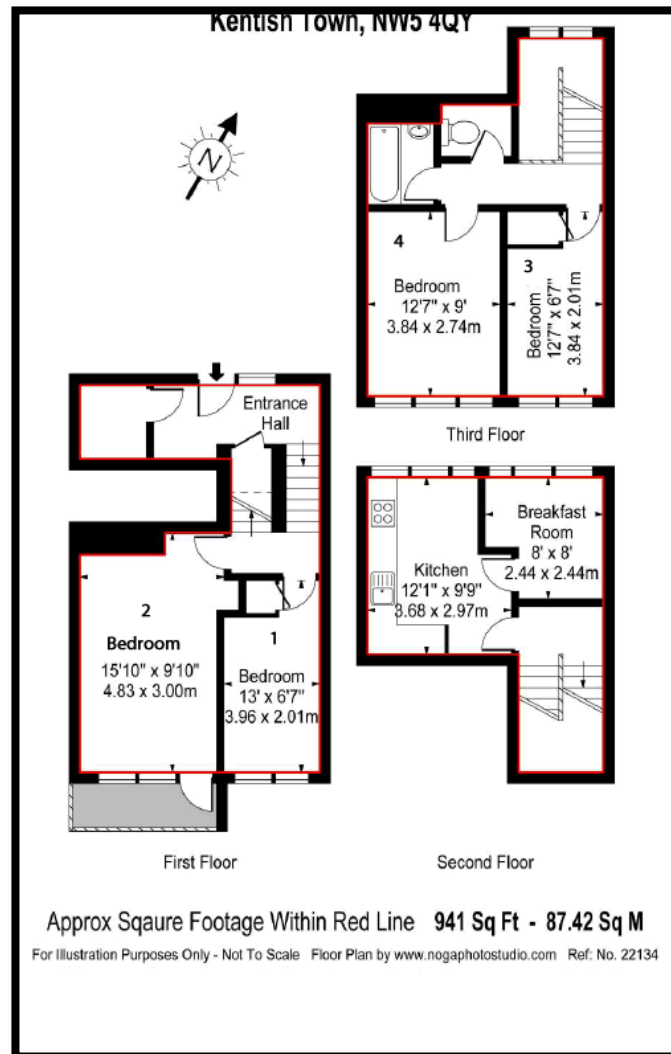




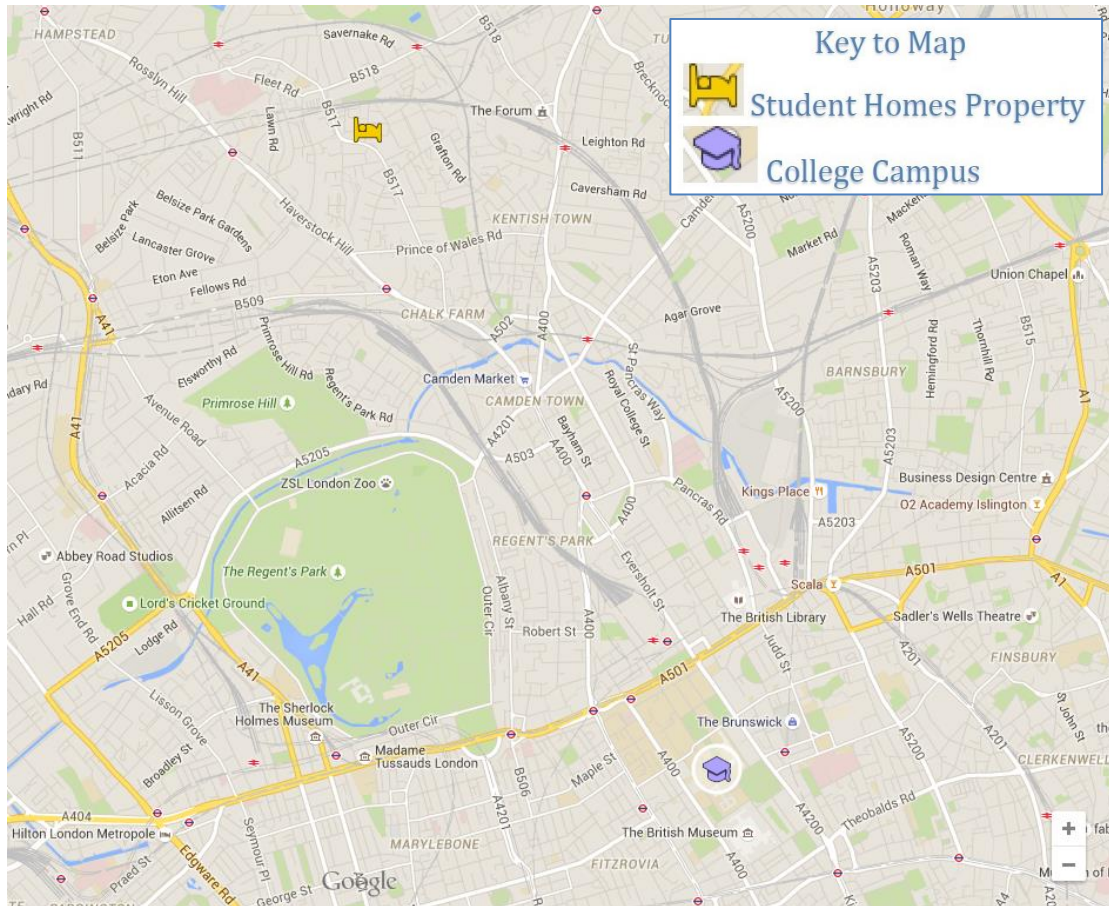
Call Student Homes on 020 7664 4836 to arrange a viewing



Floorplan:



Location:



View interactive map [here](#)

Student Homes Provide:

- ✓ Gas Safety Inspection Certificate
- ✓ Electrical Installation Inspection Certificate
- ✓ Energy Performance Certificate
- ✓ Keys for the Property – A Set for Each Tenant
- ✓ Peace of Mind with out of Hours support & advice
- ✓ Contents Insurance for you during your tenancy – this is in place through Endsleigh, details are on our website & will be provided in our Welcome Packs.