



University  
of London

# Kilburn

Willesden Lane, London, NW6 7TE

**Student  
Homes**

## Willesden Lane Bedroom Photographs

- ❖ An 8 bedroom property with a variety of rooms on offer – some singles, some doubles, one with an en-suite shower room and toilet attached. All bedroom doors are lockable.
- ❖ Tenancies for the 2017/18 academic year will begin on the 9th of September 2017 and run to the 1st of September 2018 (this is a 51 week tenancy).
- ❖ Rent varies depending on which room you pick and rent is set according to size/amenities:  
Rooms 1 (2.26m x 4.1m), 2 (3.20m x 2.82m), 5 (3.98m x 2.14m) & 6 (2.85m x 2.81m) are £134.14 per tenant per week.  
Rooms 3 (3.33m x 3.03m), 4 (2.98m x 3.15m) & 7 (3.03m x 3.17m) are £144.00 per tenant per week.  
Room 8 (the en-suite bedroom, 3.02m x 2.51m) is £156.11 per week.
- ❖ Bills are payable on top of rent, although a fortnightly visit by a professional cleaner who cleans the communal areas of the property is provided outside of rent as an additional service.
- ❖ The property features a large shared kitchen, separate lounge, shared bathroom & 2 separate showers, 2 separate toilets and a rear garden.
- ❖ A total commute of 30 minutes to RAM.

University of London Student Homes

4th Floor, Housing Services, Student Central, 2 Malet Street, London, WC1E 7HY.

020 7664 4836 • <http://studenthomes.london.ac.uk>

[Rent a room online](#)

**Room 1:**

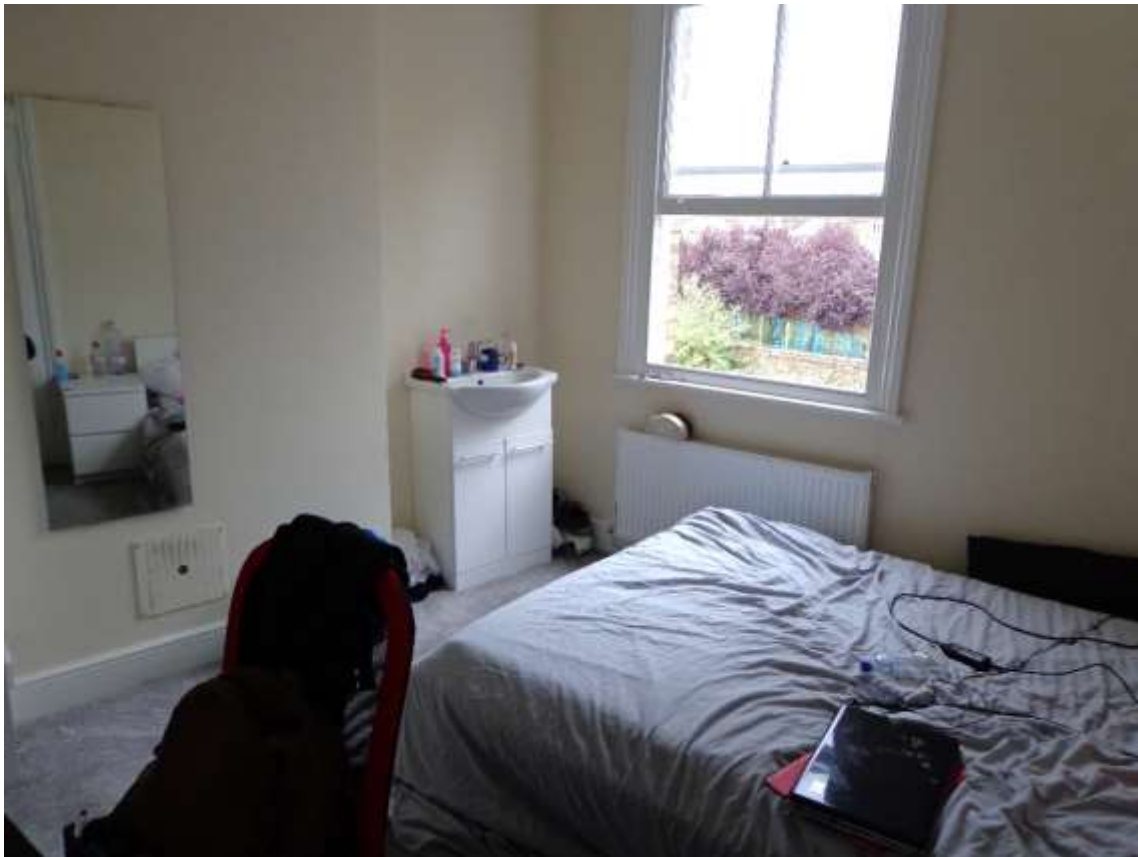


**Room 2:**





**Room 3:**



**Room 4:**



**Room 5:**



**Room 6:**





Room 7:





**Room 8:**

