



University  
of London

# Belsize Park

Wending, Haverstock Road, NW5 4QY

**Student  
Homes**

A 4 bedroom maisonette located in a well-maintained block. Available to a group of 4 students sharing, or for those looking for a room individually.

- ❖ Wending is a 4 bedroom maisonette with 2 bedrooms with double beds and 2 bedrooms with single beds.
- ❖ The property features a kitchen/diner, a small sitting room, a bathroom and separate toilet. Bedroom doors are lockable.
- ❖ Tenancies for the 2018/19 academic year begin on the 10th of September 2018 and run until the 2<sup>nd</sup> of September 2019 (for 51 weeks).
- ❖ Room 1 & 3 are priced at £145.39 per person per week, an average monthly rent of £630.02 per person. Room 2 is priced at £159.59 per week, an average monthly rent of £691.56, and Room 4 is priced at £154.11 per week, an average monthly rent of £667.81.
- ❖ Heating and hot water are included in the rent. Other utilities (electricity, water), and WIFI are not included in the rent – tenants will need to set up accounts and pay for these.
- ❖ Bedroom dimensions: Room 1: 3.96m x 2.01m, Room 2: 4.83m x 3m, Room 3: 3.84m x 2.01m, Room 4: 3.84m x 2.74m.
- ❖ The property is located close to local amenities, as well as many independent shops, restaurants and bars in Belsize Park and Hampstead. Hampstead Heath is around a 5 minute walk away.
- ❖ Based on you arriving at campus at 9am, your commute time from Wending is as follows: Russell Square Campus – 28 minutes using public transport, or a 51 minute walk.

University of London Student Homes

4th Floor, Housing Services, Student Central, 2 Malet Street, London, WC1E 7HY.

020 7664 4836 • <http://studenthomes.london.ac.uk>

[Rent a room online](#)

## Photographs:



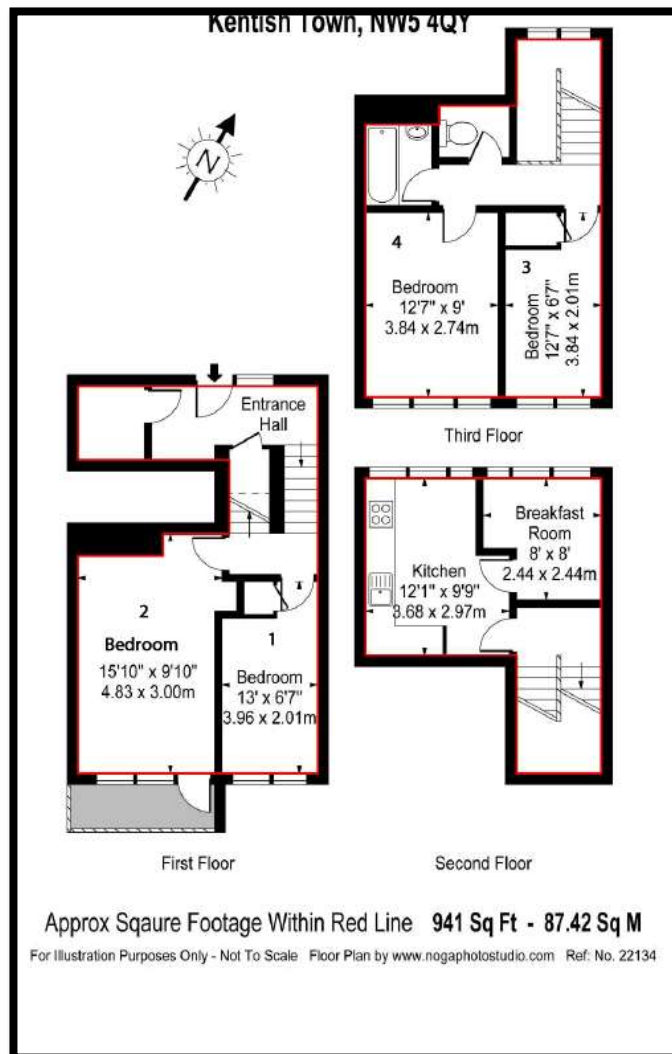


Call Student Homes on 020 7664 4836 to arrange a viewing

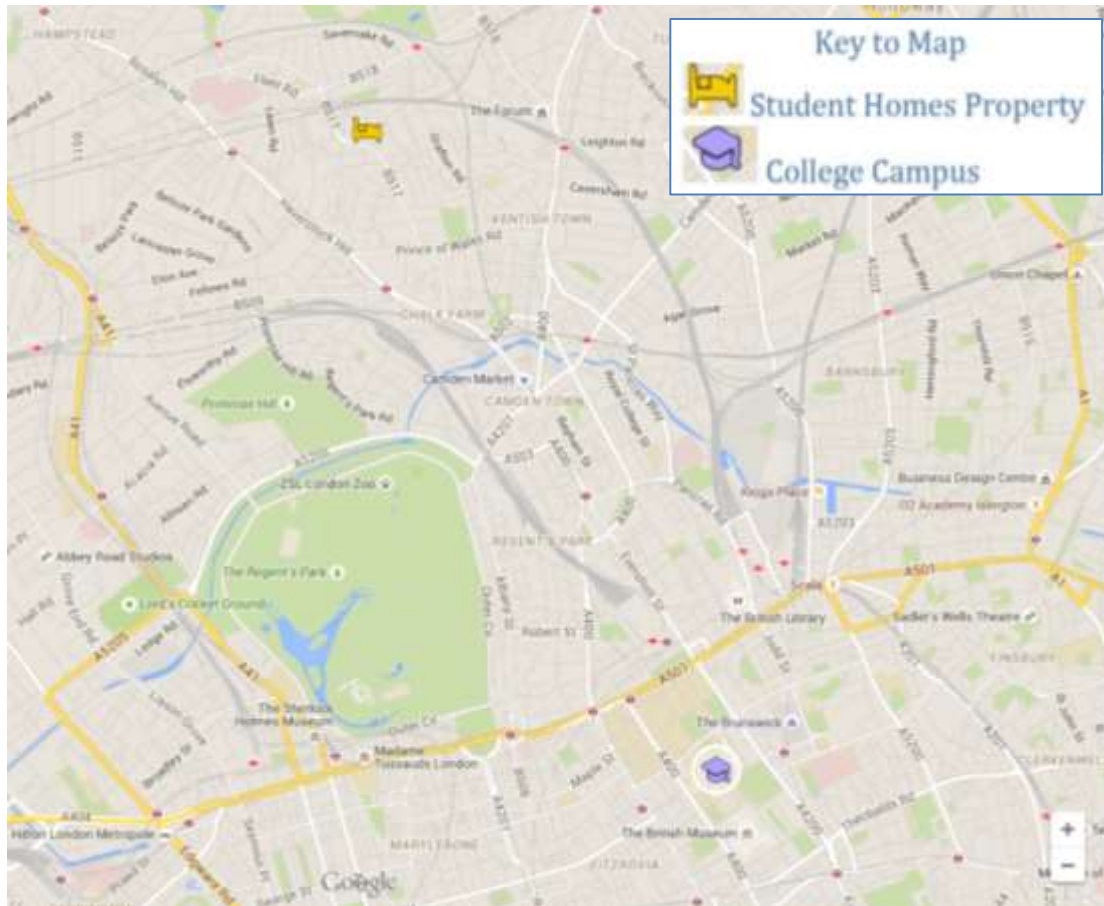




**Floorplan:**



## Location:



Click on the map to access an interactive version.

## Student Homes Provide:

- ✓ Gas Safety Inspection Certificate
- ✓ Electrical Installation Inspection Certificate
- ✓ Energy Performance Certificate
- ✓ Keys for the Property – A Set for Each Tenant
- ✓ Peace of Mind with out of Hours support & advice
- ✓ Contents Insurance for you during your tenancy – this is in place through Endsleigh, details are on our website & will be provided in our Welcome Packs.

[Rent a room online](#)