



University  
of London

# New Cross

Jerningham Road, London, SE14 5NQ

**Student  
Homes**

A 9 bedroom property a 5 minute walk from Goldsmiths. Room 4 is available from February 2017.

- ❖ A large nine bedroom property with 8 large double bedrooms and one single bedroom. All bedroom doors are lockable.
- ❖ The property features an open plan kitchen and living room, a separate utility room, one shared bathroom, one shared shower room, a separate toilet and a large garden to the rear of the property.
- ❖ Tenancies for the 2016/17 academic year run until the 2<sup>nd</sup> September 2017 (for 51 weeks).
- ❖ Rooms are priced according to size – Room 2 (the single bedroom) is available at £130.25 per week, Rooms 3, 5, 6, 8 & 9 are available at £140.79 per tenant per week, and Rooms 1, 4 & 7 are available at £149.91 per tenant per week.
- ❖ Bedroom dimensions: Room 1: 6m x 3.5m, Room 2: 3.8m x 2.6m, Room 3: 3.6m x 3.8m, Room 4: 4.4m x 4.1m, Room 5: 4.2m x 3.75m, Room 6: 4.1m x 3.7m, Room 7: 5.8m x 4.0m, Room 8: 4.1m x 2.8m, Room 9: 4.1m x 3.7m.
- ❖ Broadband is provided on top of rent as a service, as is a weekly clean of the communal areas (including a supply of dishwasher tablets and bin bags). Utilities (gas, electricity, water) are not included in the rent – tenants will need to set up accounts and pay for these.
- ❖ Jerningham Rod is located close to local amenities (including a large supermarket), and good transport links.
- ❖ Based on you arriving at campus at 9am, your commute time from Jerningham Road is as follows: 7 minute bus journey, or a 9 minute walk.

University of London Student Homes

4th Floor, Housing Services, Student Central, 2 Malet Street, London, WC1E 7HY.

020 7664 4836 • <http://studenthomes.london.ac.uk>

## Photographs:



Room 1:





Room 2:



Room 3:



Room 4:



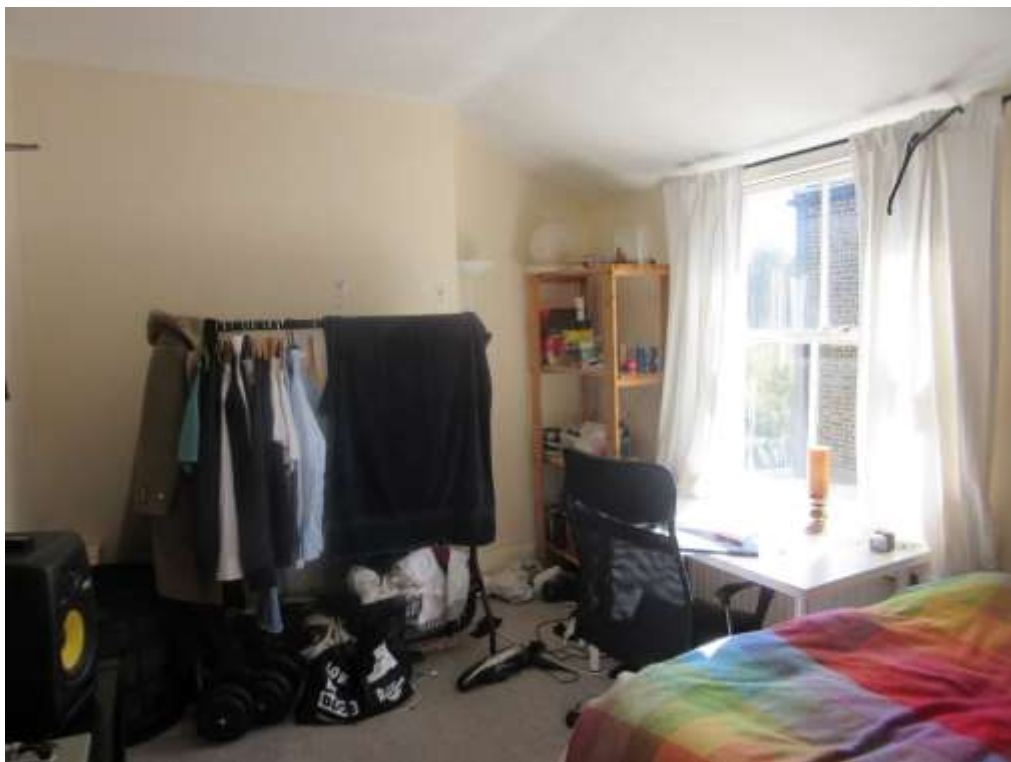
Room 5:



Room 7:



Room 8:





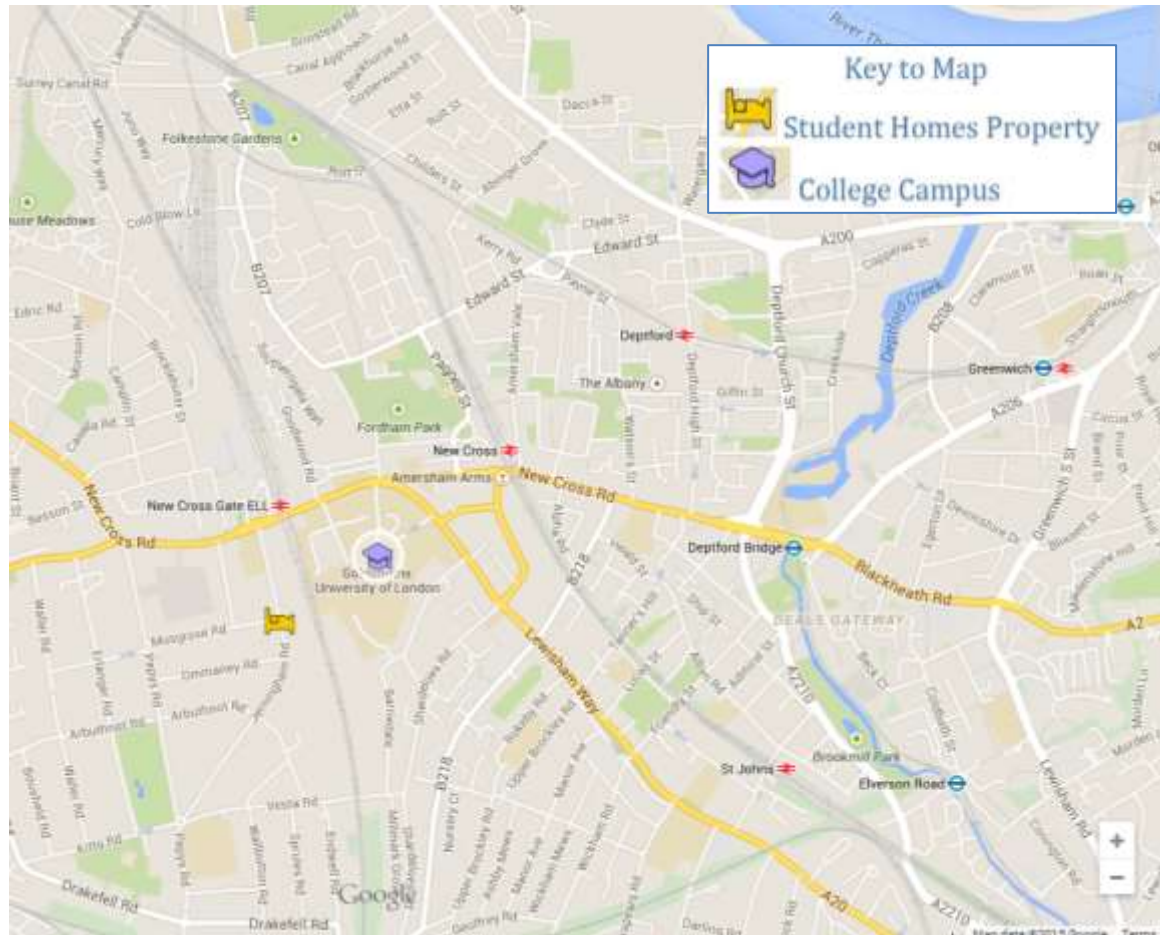
Room 9:



Rear Garden:



## Location:



Click [here](#) to view an interactive version of this map

## Student Homes Provide:

- ✓ Gas Safety Inspection Certificate
- ✓ Electrical Installation Inspection Certificate
- ✓ Energy Performance Certificate
- ✓ Keys for the Property – A Set for Each Tenant
- ✓ Peace of Mind with British Gas Home Care Cover Included along with supplemental Out of Hours Support & Guidance.
- ✓ Contents Insurance for you during your tenancy – this is in place through Endsleigh, details are on our website & will be provided in our Welcome Packs.