



University
of London

Clerkenwell

Grimthorpe House, Percival Street, EC1V 0BS

**Student
Homes**

Grimthorpe House is a 4 bedroom ground floor apartment available for students attending full-time courses at City University. Room 2 available from the 26th of June, Room 4 is available from the 1st June: both for short term stays.

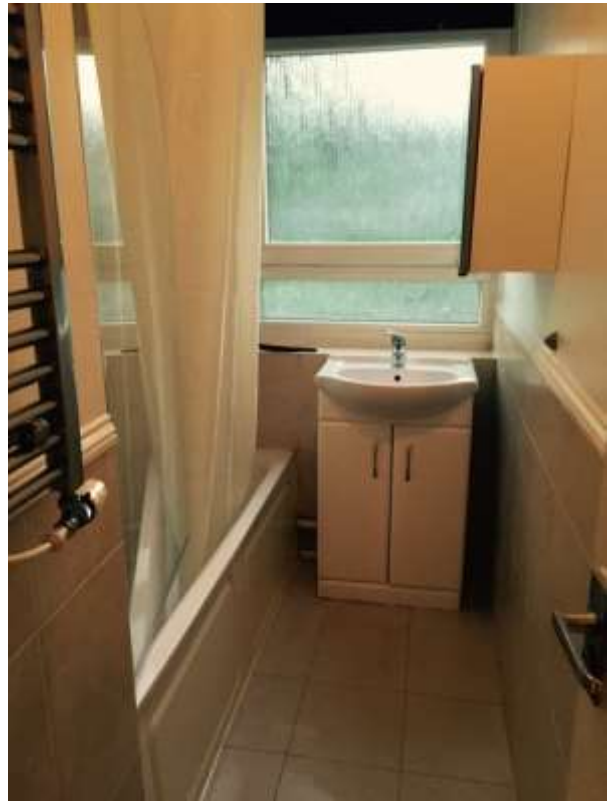
- ❖ Grimthorpe House is a 4 bedroom ground floor flat with 3 large bedrooms and one smaller bedroom. The property has a separate kitchen and a shared bathroom.
- ❖ Tenancies for the 2016/17 academic year run through to the 24th August 2017.
- ❖ Rent varies depending on which room you opt for: Room 1, is a double bedroom (9.7m²) and is priced at £170 per week, an average of £736.67 per month. Room 2 is a large double bedroom (12.4m²) and is priced at £183 per week, an average of £793 per month. Room 3 is a single room (7.8m²) and is priced at £163.84 per week, an average of £709.97 per month. Room 4 is a very large double room (19.9m²) and is priced at £192 p/w, an average of £832 per month.
- ❖ Utilities (gas, electricity, water), and WIFI are not included in the rent – tenants will need to set up accounts and pay for these.
- ❖ The flat is located close to good local amenities and is a short walk to campus. There are supermarkets nearby and lots of smaller local shops. Great transport links close-by.
- ❖ Based on arriving on campus at 9am, the commute time is as follows: 4 minute walk

University of London Student Homes

4th Floor Student Central, 2 Malet Street, London, WC1E 7HY

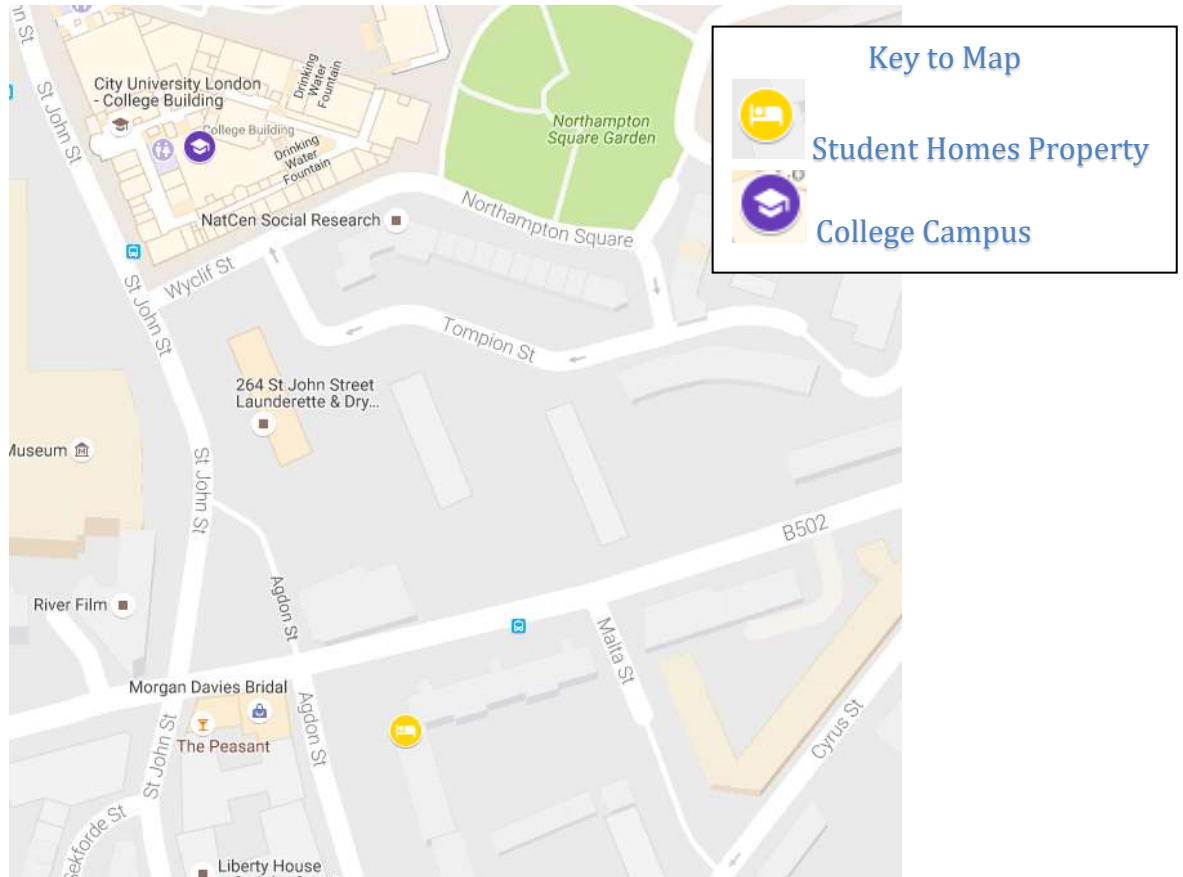
020 7664 4836 <http://studenthomes.london.ac.uk>

Photographs:





Location:



Click on the map to access an interactive version

Student Homes Provide:

- ✓ Gas safety inspection certificate.
- ✓ Electrical installation inspection certificate.
- ✓ Energy performance certificate.
- ✓ Keys for the property – a set for each tenant.
- ✓ Peace of mind with British Gas home care cover included and out of hours support & advice.
- ✓ Contents Insurance for you during your tenancy – this is in place through Endsleigh, details are on our website & will be provided in our welcome packs.