



University
of London

Kilburn

Fordwych Road, NW2 3TN

**Student
Homes**

A 7 bedroom semi-detached period property. Available to full-time University of London students – room 6 available now.

- ❖ Fordwych Road is a semi-detached 7 bedroom house with 7 spacious bedrooms, all of which have single beds and lockable bedroom doors.
- ❖ The property features an open plan kitchen/diner, a lounge, a second kitchen, 2 bathrooms, and 3 separate toilets. There is also a large rear garden.
- ❖ Tenancies for the 2016/17 academic year run until 24th August 2017.
- ❖ Rent is £135.83 per tenant per week, which equates to an average monthly rent of £588.60 per tenant.
- ❖ Bedroom dimensions: Room 1: 5.78 x 4.16m, Room 2: 4.11m x 3.82m, Room 3: 3.7m x 3.35m, Room 4: 4.21m x 3.83m, Room 5: 4.78m x 5.87m, Room 6: 3.98m x 4.31m, Room 7: 4.80m x 3.82m.
- ❖ Utilities (gas, electricity, water), are not included in the rent – tenants will need to set up accounts and pay for these. As a service (i.e. not included in the rent), complimentary Wi-Fi is provided as well as a weekly cleaner for the communal areas.
- ❖ The property is located close to local amenities, as well as many independent shops, restaurants and bars. Maygrove Peace Park and Kilburn Grange Park are a short walk away.
- ❖ Based on you arriving at campus at the Bloomsbury University campuses for around 9am, your commute time from Fordwych Road is as follows: 31 minutes using public transport.

University of London Student Homes

4th Floor, Housing Services, Student Central, 2 Malet Street, London, WC1E 7HY.

020 7664 4836 • <http://studenthomes.london.ac.uk>

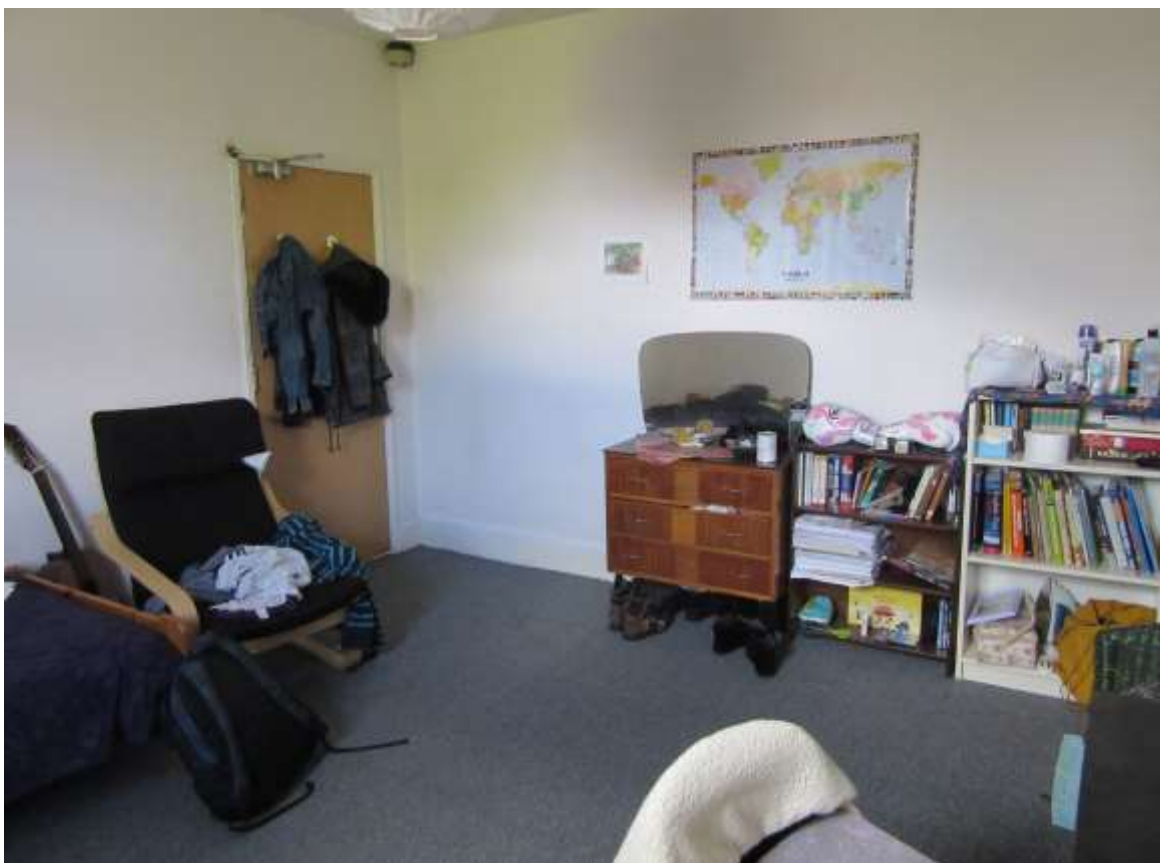
Photographs



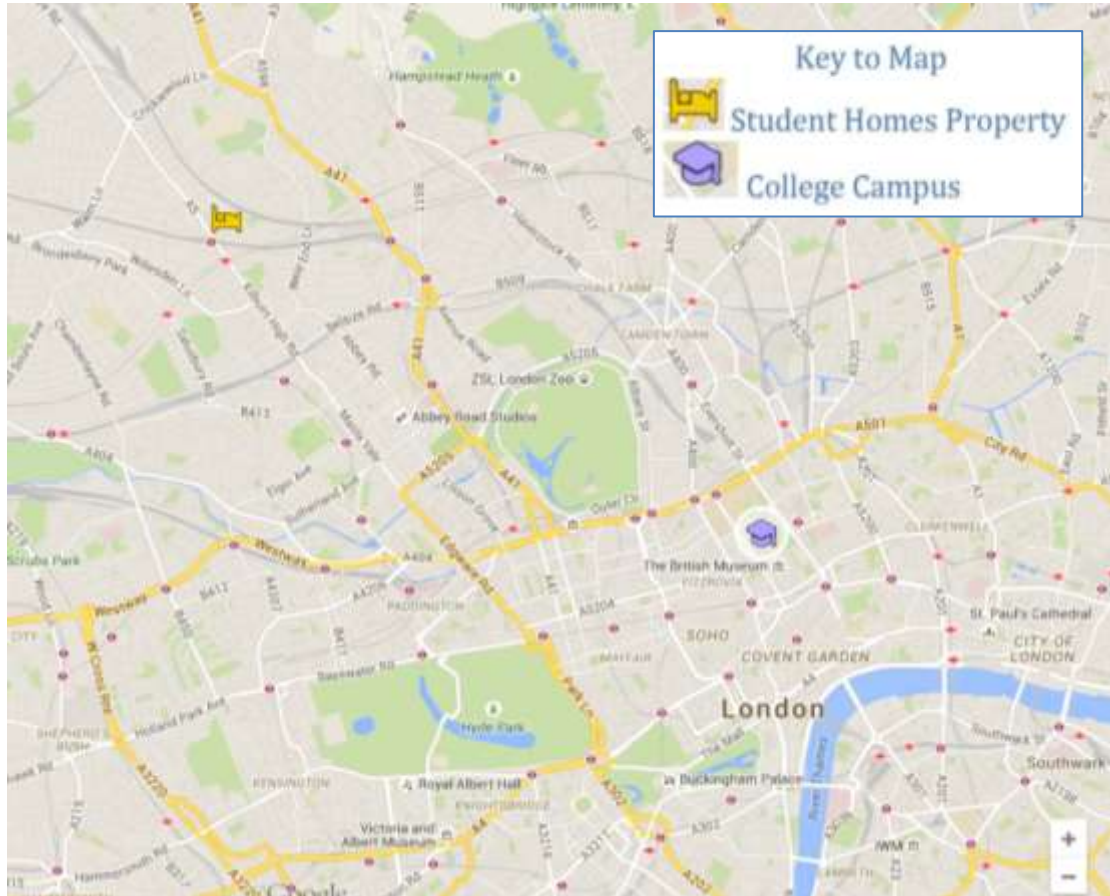


Room 6





Location:



View an interactive version of this map [here](#)

Student Homes Provide:

- ✓ Gas safety inspection certificate.
- ✓ Electrical installation inspection certificate.
- ✓ Energy performance certificate.
- ✓ Keys for the property – a set for each tenant.
- ✓ Peace of mind with out of hours support & advice.
- ✓ Contents Insurance for you during your tenancy – this is in place through Endsleigh, details are on our website & will be provided in our welcome packs.