



University
of London

**Student
Homes**

Marylebone

George Street, London, W1H 5LA

A spacious, centrally-located 3 bedroom flat available for SOAS students looking to rent rooms individually, or as a group of 3 sharing.

- ❖ Flat 2, is an upper floor (on the second floor) 3 bedroom apartment with 3 bedrooms all of which have double beds, a shared lounge with a dining table, shared kitchen and a shared bathroom. The kitchen and bathroom/s are modern and the flat is light and airy and neutrally decorated throughout.
- ❖ This flat is located with a small block of 8 flats in total, Student Homes manage 5 of the flats. A small lift serves the block – useful for when you move in more than anything else.
- ❖ Tenancies for the 2018/19 academic year will begin on the 21st of September 2018 and will run through to the 14th of September 2019 (this is a 51 week tenancy).
- ❖ Rent is set based on room choice: Room 1 is a large bedroom and is £218.08 per week, Room 2 is a smaller bedroom and is £208.06 per week & Room 3 a large bedroom with an en-suite shower room is £229.12 per week. Utilities (gas, electricity, water), and WIFI are not included in the rent – tenants will need to set up accounts and pay for these.
- ❖ The flat is located close to good local amenities and travel links including the shop, restaurants, cafes, and eateries on Edgware Road. All of the shops on Oxford Street – just a short walk away – and Central London parks, attractions, and transport links.
- ❖ Based on you arriving at campus at 9am, your commute time from Bernard House is as follows: Russell Square Campus – 24 minutes using public transport, or a 34 minute walk. Vernon Square – 28 minutes using public transport, or a 51 minute walk.
- ❖ Please note: There is building work on a site just over the road from the flat, we expect this work to be ongoing through the 2018/19 tenancies at Bernard House. This is following the demolition of the property that was previously on this site.

University of London Housing Services

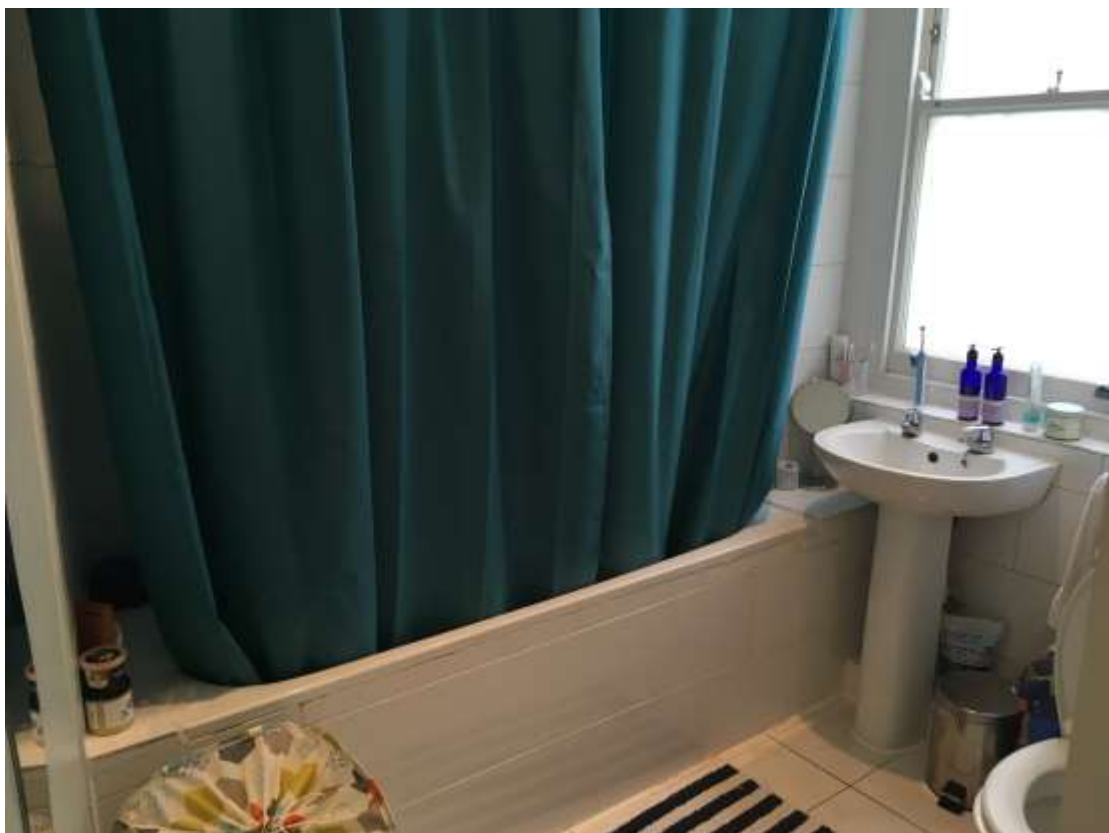
4th Floor Student Central, 2 Malet Street, London WC1E 7HY

020 7664 4836 • <http://studenthomes.london.ac.uk>

[Rent a room online](#)

Photographs:







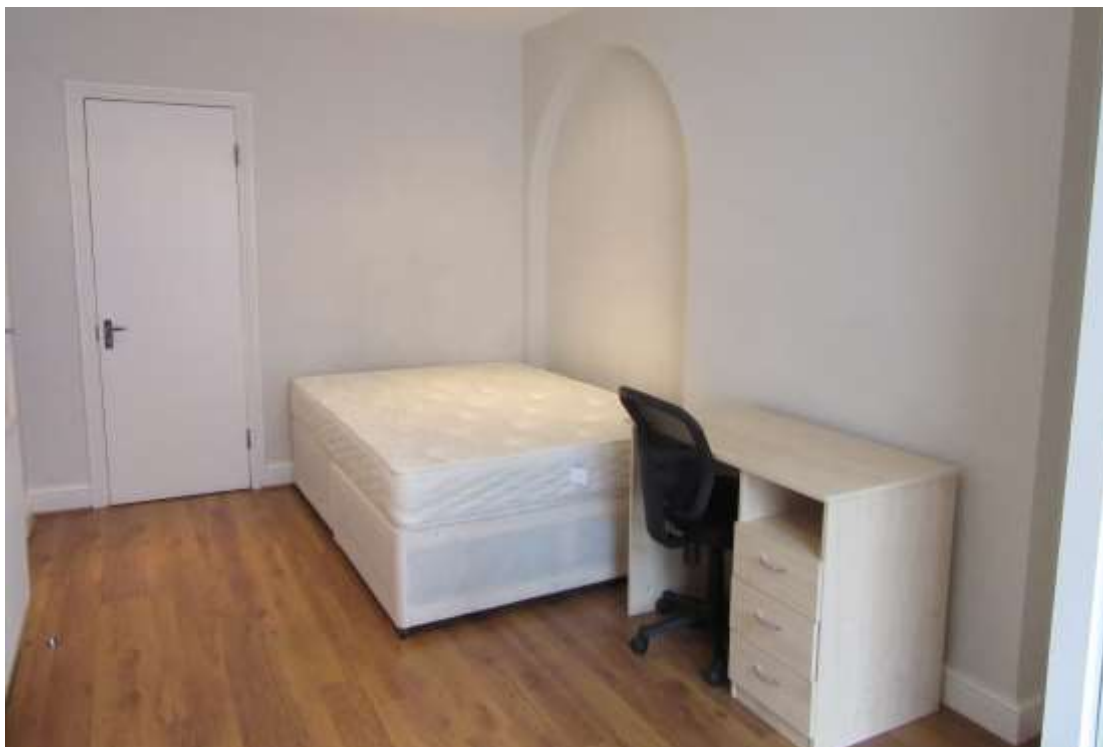
Room 1:



Room 2:

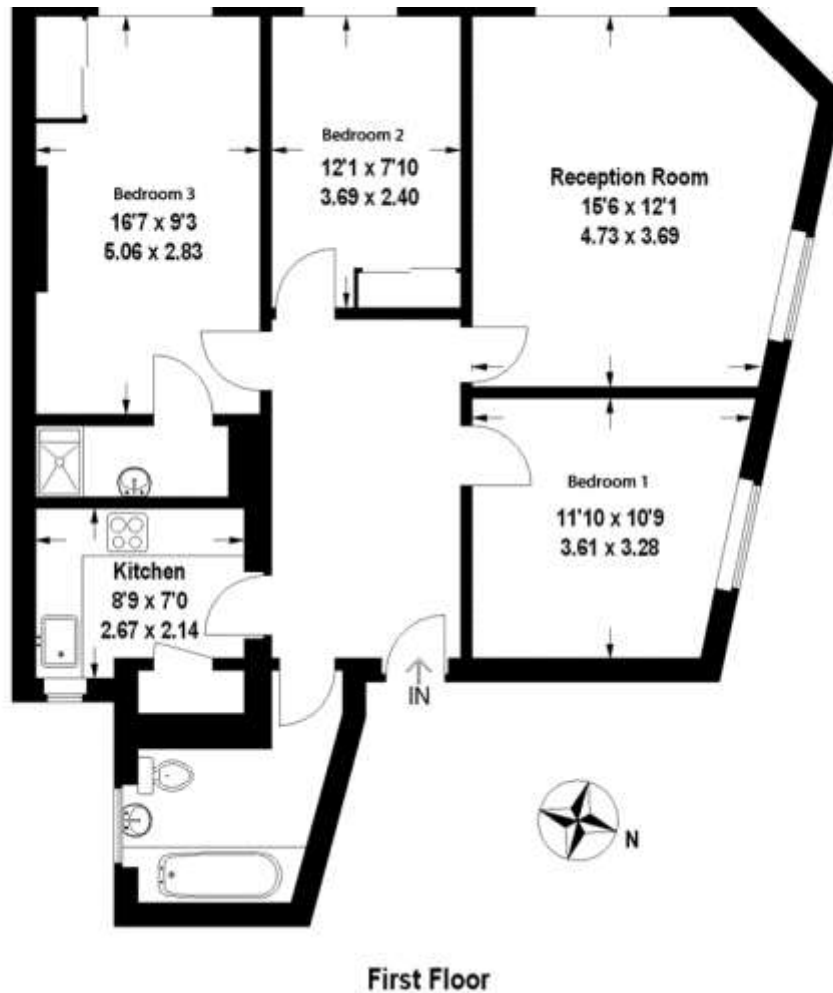


Room 3:



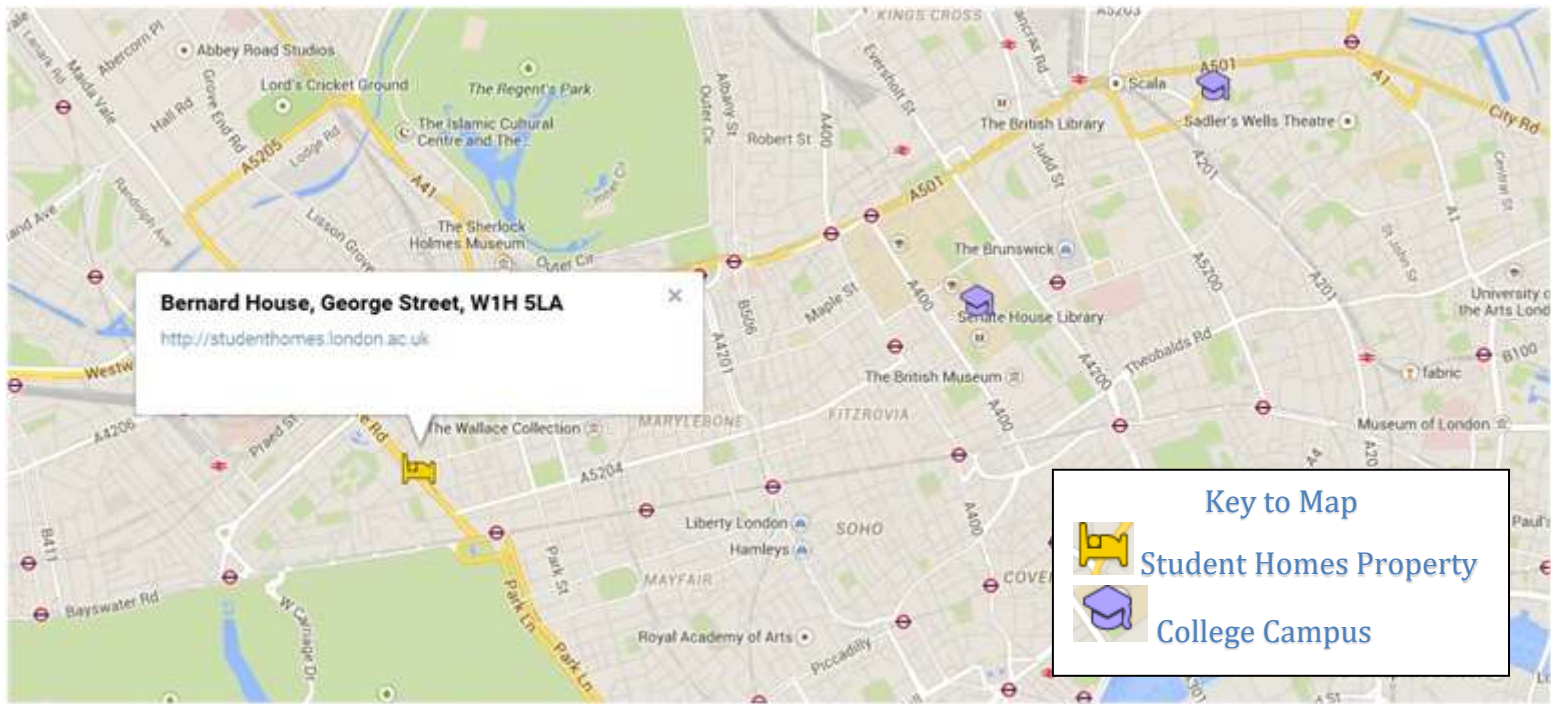


Floorplan:



This plan is for layout guidance only. Not drawn to scale unless stated. Windows and door openings are approximate. Whilst every care is taken in the preparation of this plan, please check all dimensions, shapes and compass bearings before making any decisions reliant upon them. (ID50005)

Location:



Click on the map to access an interactive version.

Student Homes Provide:

- ✓ Gas safety inspection certificate.
- ✓ Electrical installation inspection certificate.
- ✓ Energy performance certificate.
- ✓ Keys for the property – a set for each tenant.
- ✓ Peace of mind with comprehensive out of hours support, guidance & advice.
- ✓ Contents insurance for you during your tenancy – this is in place through Endsleigh, details are on our website & will be provided in our welcome packs.

[Rent a room online](#)