



University
of London

Dulwich

Barry Road, SE22 0JW

Student Homes

An 8 bedroom semi-detached period property. Available to full-time University of London students on individual tenancies for periods of 2 months or more.

- ❖ Barry Road is a spacious 8 bedroom house set over 2 levels with 8 bedrooms all of which have double beds. Bedroom doors are lockable. The property features 2 spacious kitchens, a dining area, 2 bathrooms and a large rear garden... great for the summer ☺
- ❖ The house is double glazed, amenities include a dishwasher and dryer.
- ❖ **We can let rooms for a minimum period of 2 months, or until 2nd September 2017.**
- ❖ Rent varies based on room size. Rooms 1 and 5 are £169.25 per week, which equates to an average monthly rent of £733.42 per month. Rooms 2 and 6 are £161.04 per week, which equates to an average monthly rent of £697.84. Rooms 3, 4, 7 and 8 are £156.85 per week, which equates to an average monthly rent of £679.68.
- ❖ Utilities (gas, electricity, water), and WIFI are not included in the rent – tenants will need to set up accounts and pay for these.
- ❖ Good local amenities nearby – lots of shops and bars on Lordship Lane, around a 5 minute walk away, not far from Peckham which is also good for nightlife and eateries.
- ❖ Based on you arriving at campus at 9am, your commute time from Barry Road is as follows: KCL Guy's Campus – from 50 minutes using public transport. Strand Campus – from 55 minutes using public transport. St Thomas Campus – from 55 minutes using public transport. Waterloo Campus – from 50 minutes using public transport. Denmark Hill campus – 25 minutes using public transport, or a 40 minute walk. A 33 minute commute using public transport to Goldsmith's.

University of London Student Homes

[Rent a room online](#)

4th Floor, Housing Services, Student Central, 2 Malet Street, London, WC1E 7HY.

020 7664 4836 • <http://studenthomes.london.ac.uk>

Photographs:





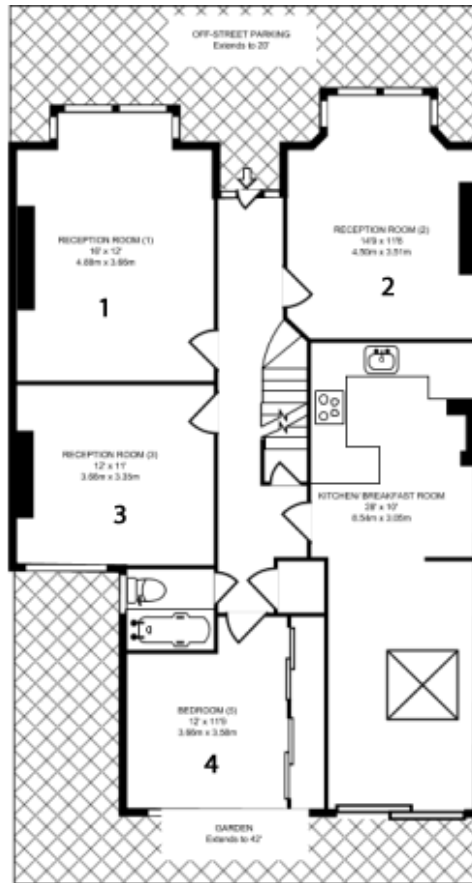
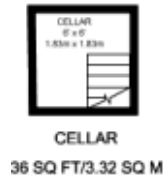


Call Student Homes on 020 7664 4836 to arrange a viewing

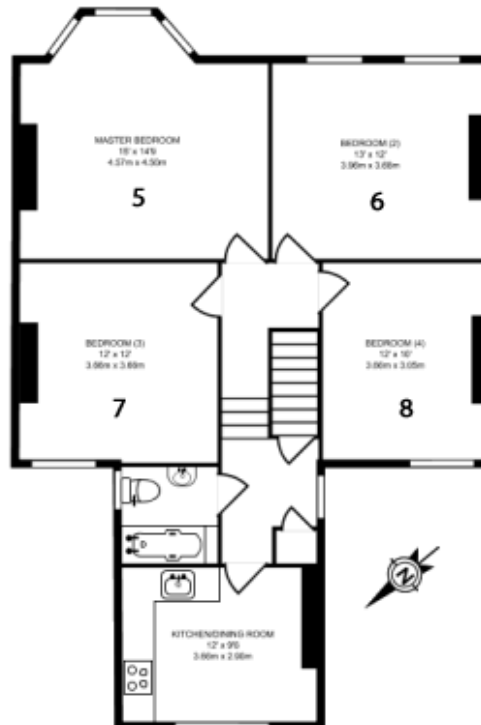


Call Student Homes on 020 7664 4836 to arrange a viewing



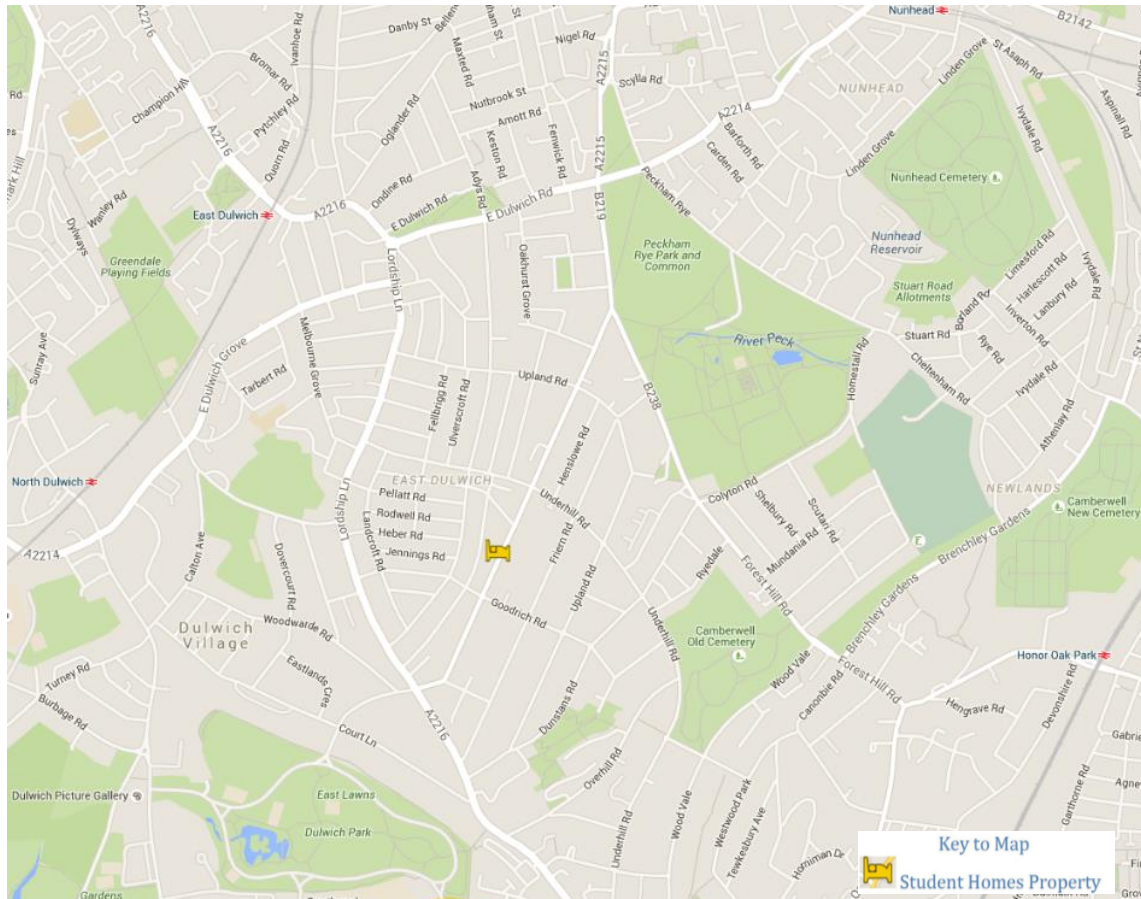


GROUND FLOOR GROSS INTERNAL FLOOR AREA
1,019 SQ FT/94.67 SQ M



FIRST FLOOR GROSS INTERNAL FLOOR AREA
876 SQ FT/81.45 SQ M

Location:



Click on the map for an interactive version with marked locations of University of London Colleges

Student Homes Provide:

- ✓ Gas Safety Inspection Certificate
- ✓ Electrical Installation Inspection Certificate
- ✓ Energy Performance Certificate
- ✓ Keys for the Property – A Set for Each Tenant
- ✓ Peace of Mind with out of Hours support & advice
- ✓ Contents Insurance for you during your tenancy – this is in place through Endsleigh, details are on our website & will be provided in our Welcome Packs.

[Rent a room online](#)